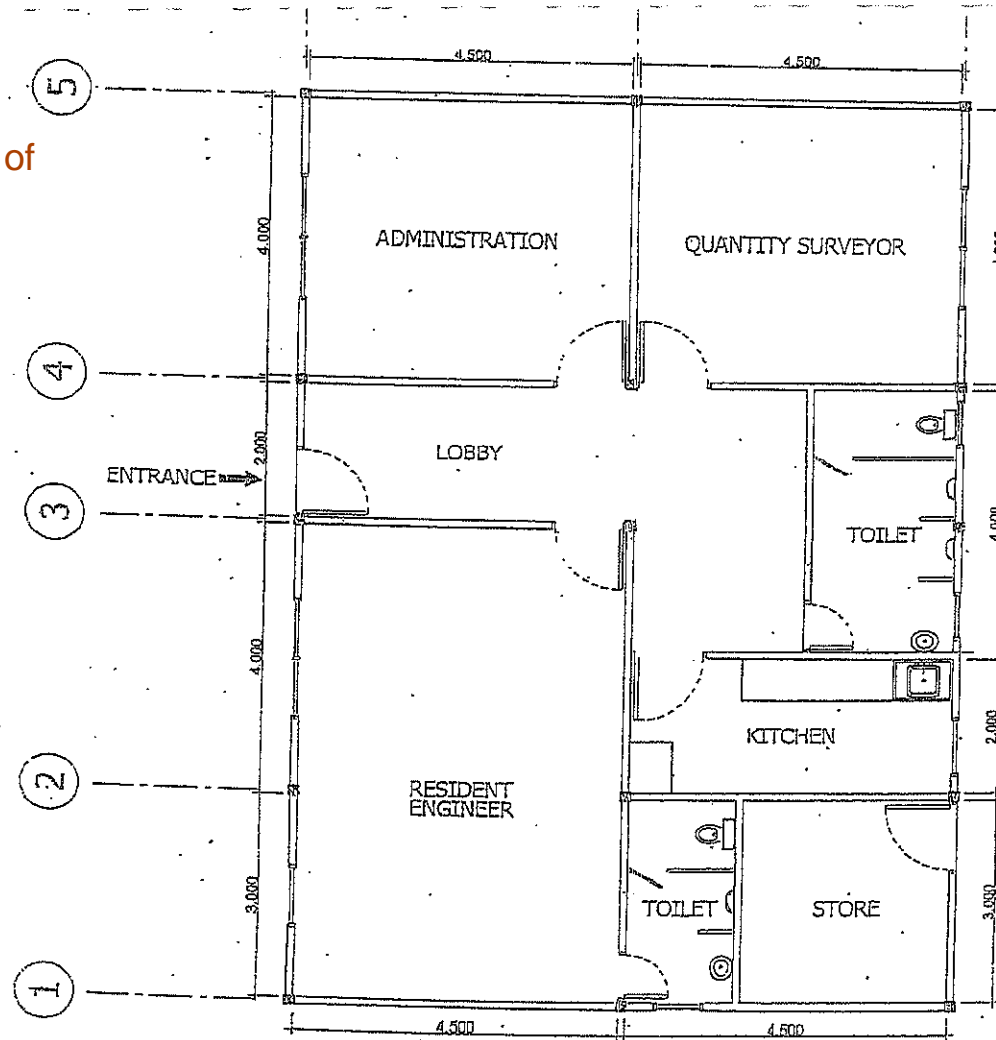


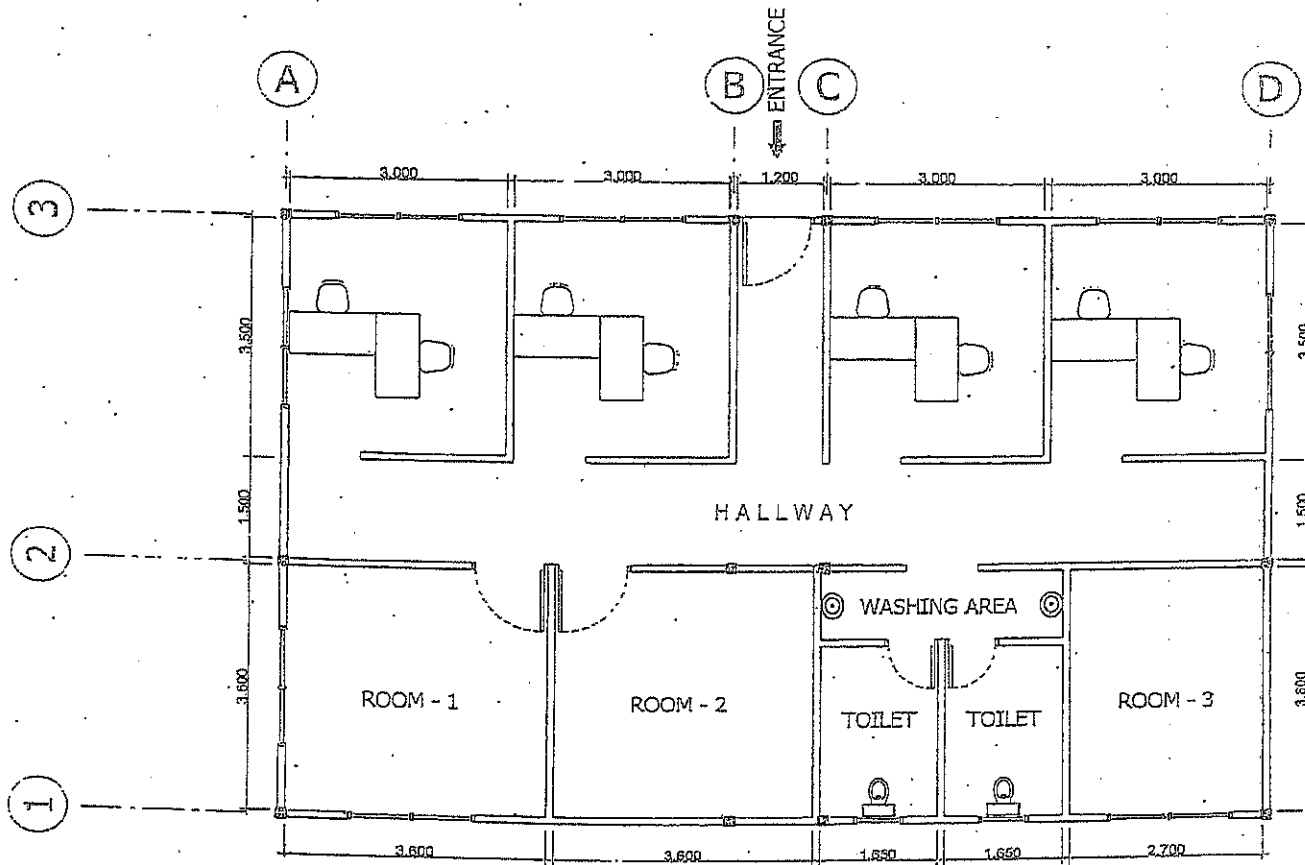
Tender 15/2014 - Construction of
Channel Dangert 1 in SEZAD
Duqm.



 **FLOOR PLAN**
SCALE: 1 : 200 MTS.

AREA = 114m² (TYPE A)

FIG. 1

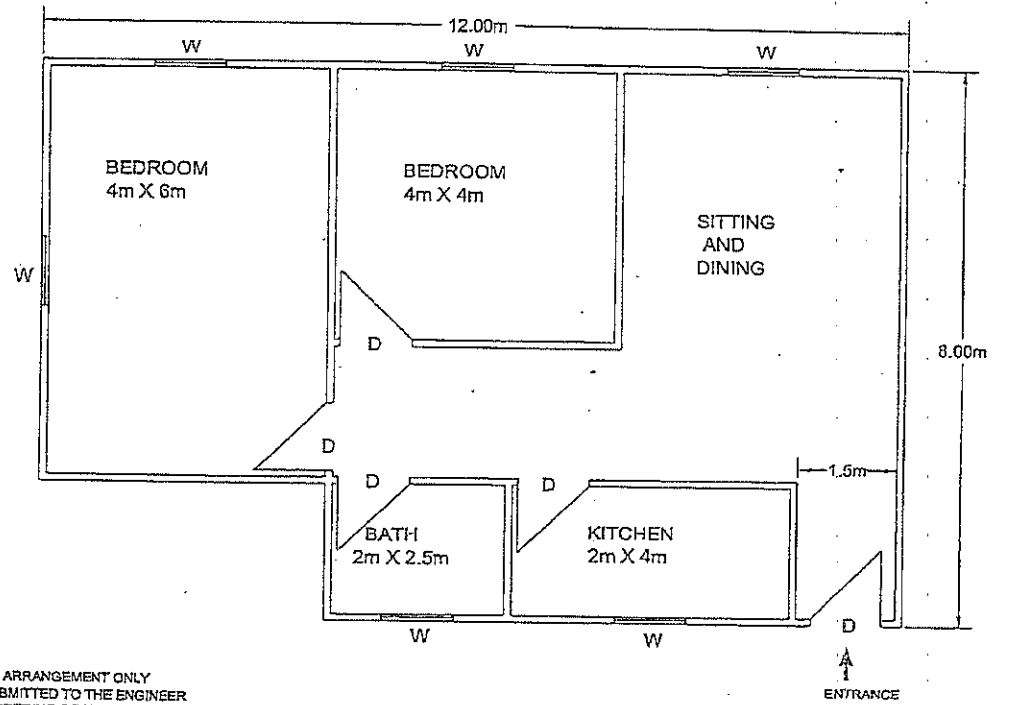


FLOOR PLAN
 SCALE: 1 : 200 MTS.

AREA = 118.80m² (TYPE A1)

FIG. 2

TYPICAL TWO BEDROOM HOUSE/UNIT



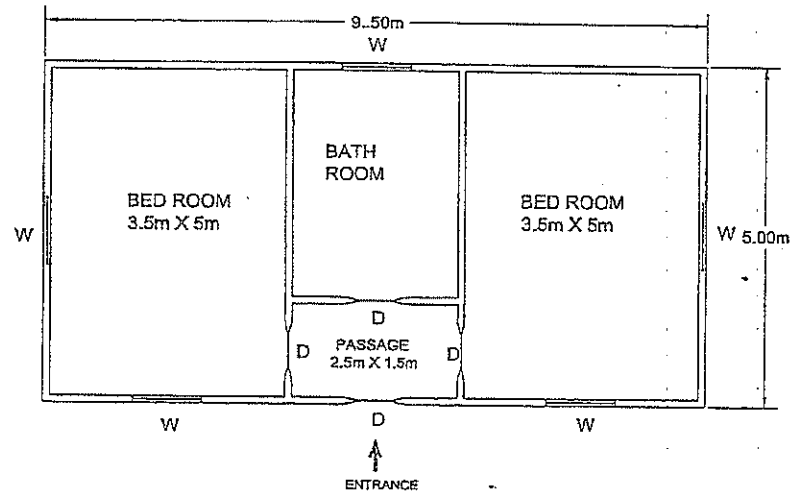
D = DOOR
W = WINDOW

NOTES :-
- THIS SKETCH IS INDICATIVE ARRANGEMENT ONLY
DETAIL DRAWINGS TO BE SUBMITTED TO THE ENGINEER
FOR APPROVAL PRIOR TO ORDERING OF UNITS.
- ALL DOORS (D) AND WINDOWS (W) SHALL BE OF
SIZES APPROVED BY THE ENGINEER.

TOTAL COVERED AREA = 96 SQ.M.

Figure 3 -Two Bedroom Unit Type "B"

TYPICAL PLAN OF PORTACABIN



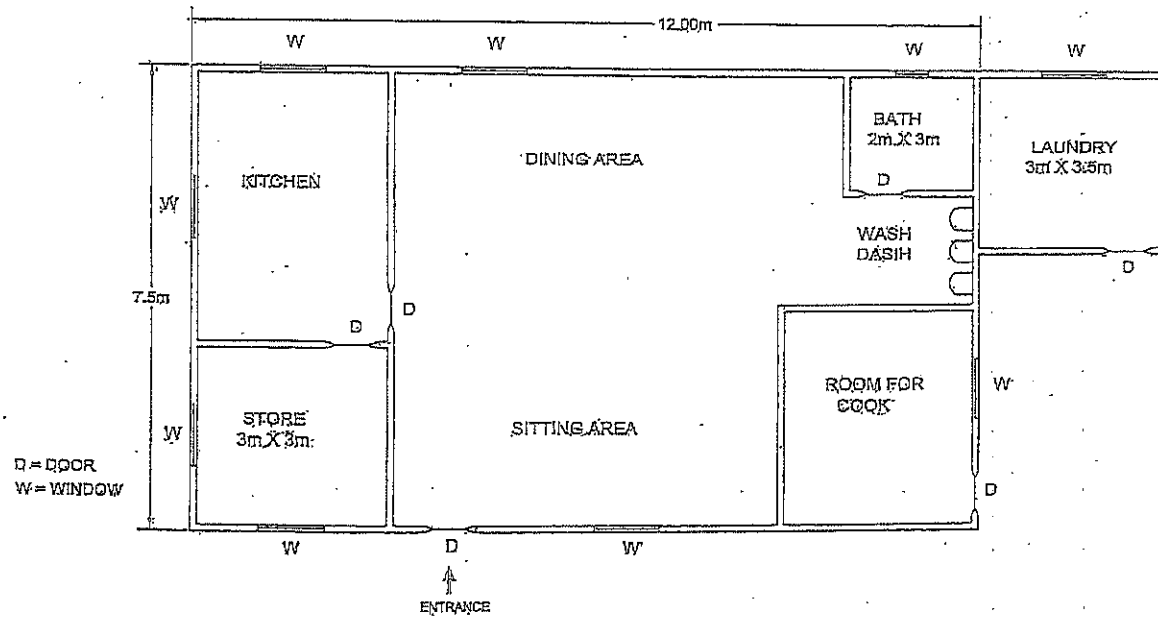
D = DOOR
W = WINDOW

- NOTES :-
- THIS SKETCH IS INDICATIVE ARRANGEMENT ONLY
DETAIL DRAWINGS TO BE SUBMITTED TO THE ENGINEER
FOR APPROVAL PRIOR TO ORDERING OF UNITS.
 - ALL DOORS (D) AND WINDOWS (W) SHALL BE OF
SIZES APPROVED BY THE ENGINEER.

Figure 4 - Hostel Accommodation Type -C

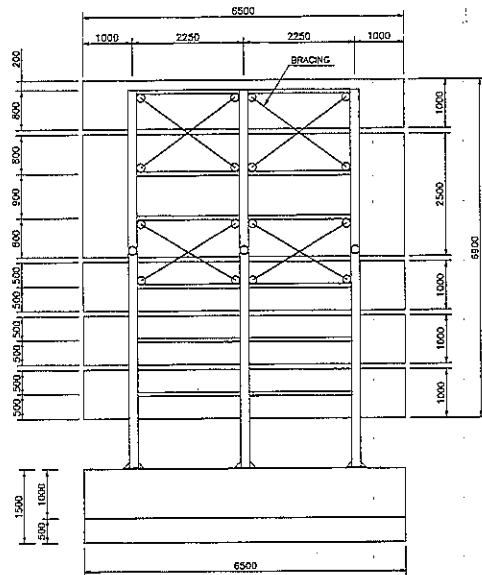
TYPICAL PLAN OF DINING/KITCHEN BLOCK

TYPE D - 1 NOS.

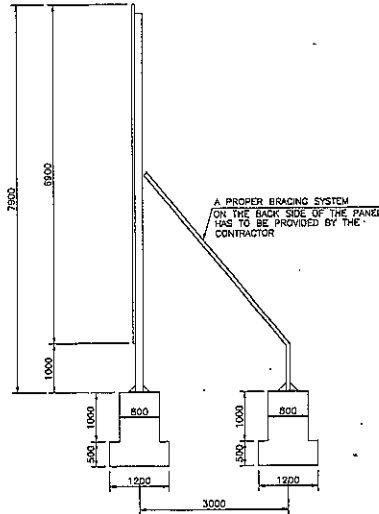


FOR NOTE REFER TO FIG. NO. 1

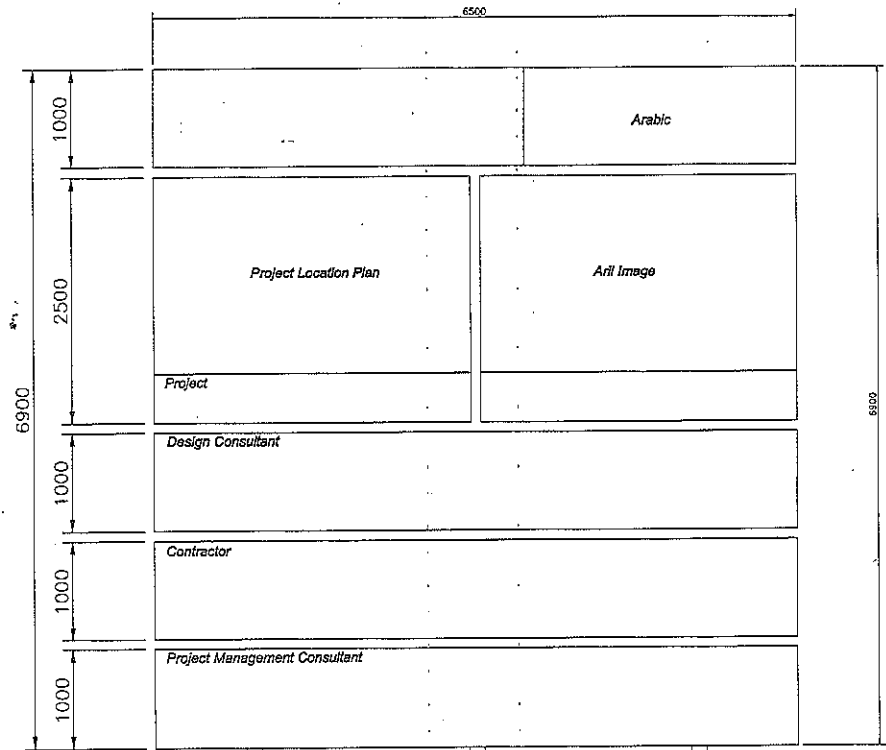
Figure 5 - Kitchen Unit (TYPE D)



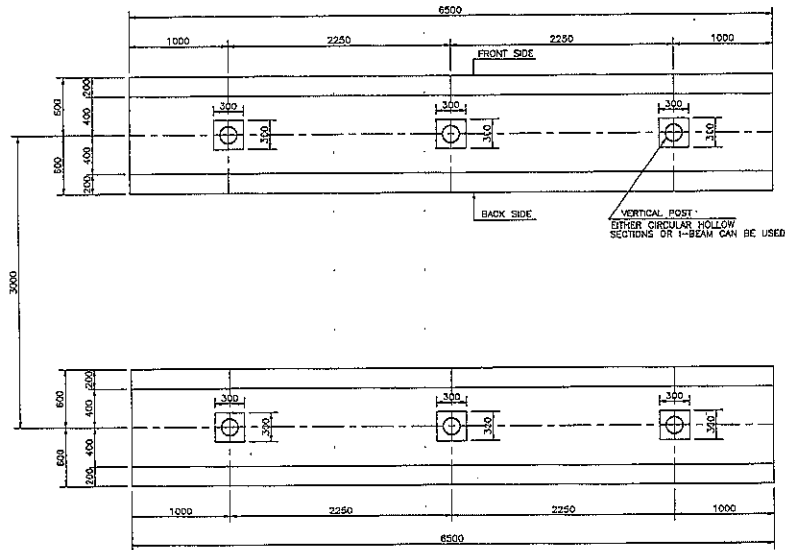
ELEVATION BACK SIDE
SCALE 1:50



SECTION A
SCALE 1:50



ELEVATION FROND SIDE
SCALE 1:25



FOUNDATION PLAN
SCALE 1:25

**PROJECT IDENTIFICATION
SIGN BOARD DETAILS
FIG. 6**

NOTES:-

- 1- A PROPER BRACING SYSTEM HAS TO BE PROVIDED BY THE CONTRACTOR IN ORDER TO FULFILL WITH SERVICEABILITY AND ULTIMATE LIMIT STATES.
- 2- BOTH BRACING SYSTEMS (IN THE FRAME OWN PANEL AND ON THE BACK SIDE OF THE FRAME) ARE ONLY SCHEMATICALLY SHOWN IN THE SUBMITTED DRAWING.